

# Love Divine, All Loves Excelling

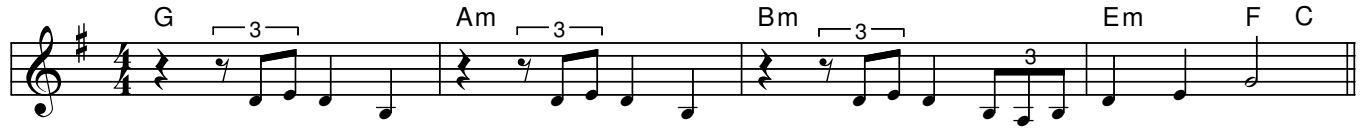
(BEECHER 87.87 D — #384, *The United Methodist Hymnal*)

Words by Charles Wesley

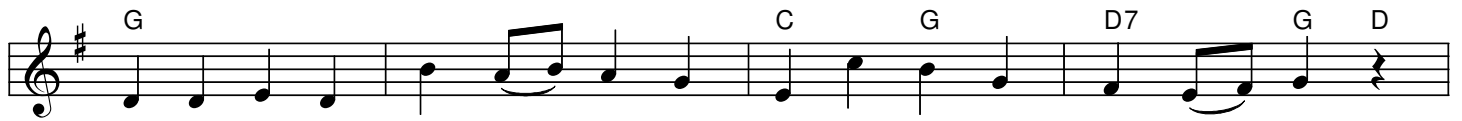
Music by John Zundel

Arrangement and new refrain by Phil Carver

Moderate swing (♩ = 116)



1. Love di - vine, all loves ex - cell - ing, joy of heaven, to earth come down;
2. Breathe, O breathe thy lov - ing Spir - it in - to ev - ery trou - bled breast!
3. Come, Al - might - y to de - liv - er, let us all thy life re - ceive;
4. Fin - ish, then, thy new cre - a - tion; pure and spot - less let us be.



fix in us thy hum - ble dwell - ing; all thy faith - ful mer - cies crown!  
 Let us all in thee in - her - it; let us find that sec - ond rest.  
 sud - den - ly re - turn and nev - er, nev - er - more thy tem - ples leave.  
 Let us see thy great sal - va - tion per - fect - ly re - stored in thee;



Je - sus, thou art all com - pas - sion, pure, un - bound - ed love thou art;  
 Take a - way our bent to sin - ning; Al - pha and O - me - ga be;  
 Thee we would be al - ways bless - ing, serve thee as thy hosts a - bove,  
 changed from glo - ry in - to glo - ry, till in heaven we take our place,



vis - it us with thy sal - va - tion; en - ter ev - ery  
 end of faith, as its be - gin - ning, set our hearts at  
 pray and praise thee with - out ceas - ing, glo - ry in thy  
 till we cast our crowns be - fore thee, lost in won - der,



trem - bling heart.

lib - er - ty.  
 per - fect love.  
 love, and praise.

*Refrain*

E $\flat$ 
B $\flat$ 
Cm7
Fm
B $\flat$ 
E $\flat$

Love di - vine, Je - sus, you're the sign.

Cm
Fm
B $\flat$ 7
E $\flat$

Grace of God re - vealed in you. May we

*last time to Coda*
*D.S. al Coda*

A $\flat$ 
A $\flat$ /B $\flat$ 
C
C/D
G
Bm
Em
F
C

live by your de-sign.

C
C7
F
C
Dm7
Gm
C
F

Love di - vine, Je - sus, you're the sign.

Dm
Gm
C7
F
B $\flat$ 
B $\flat$ /C
D
D7

Grace of God re - vealed in you. May we live by your de-sign.

G
Am
Bm
Em
F
C
G